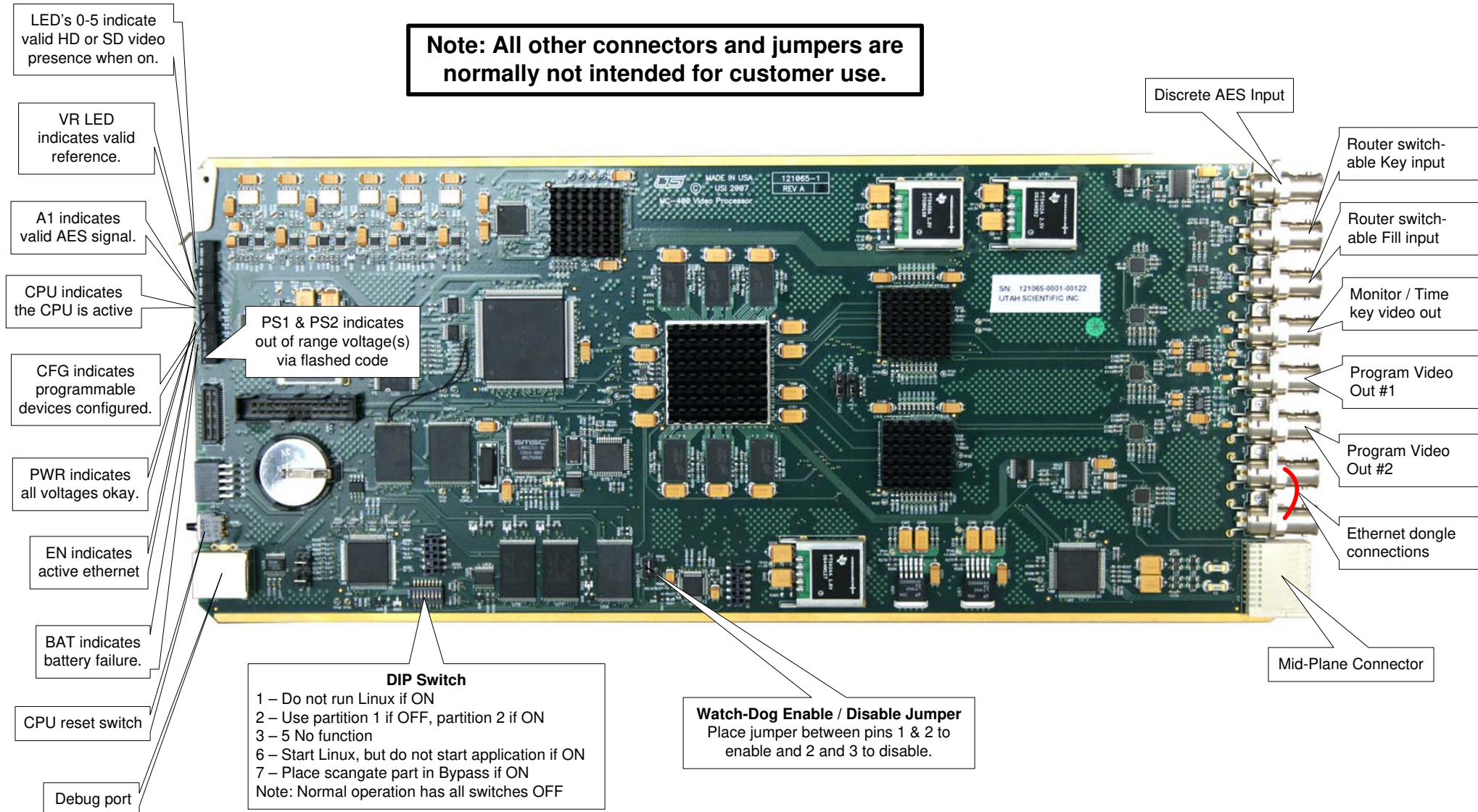
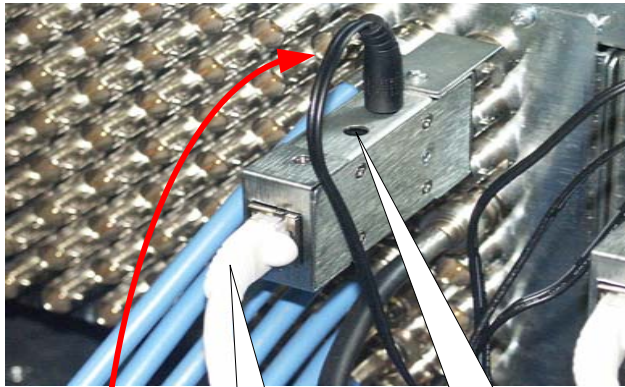


**Note: All other connectors and jumpers are normally not intended for customer use.**



## Typical Ethernet Dongle Connection

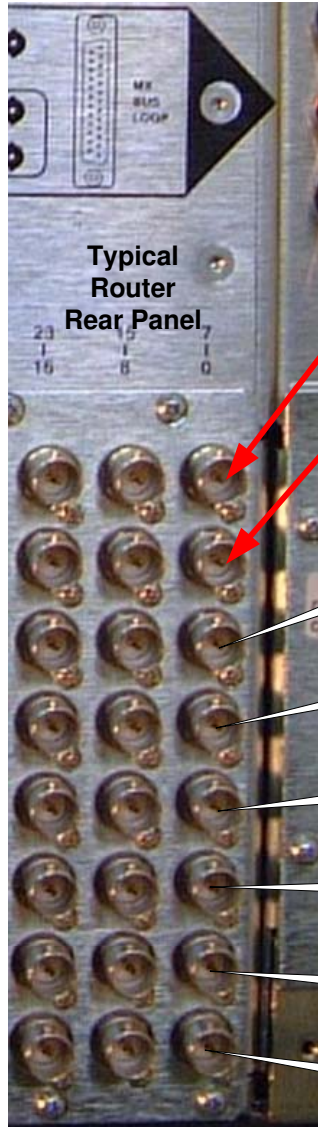


2<sup>nd</sup> Power Supply Connection

Cat-5 Ethernet Cable



Ethernet Dongle Power Supply  
(2 Each)



Typical Router Rear Panel

Hold-down clip. Remove screw to release clip, attach dongle to the BNC's and then re-install the clip.



RJ-45 Ethernet Connection

Program Video Out #2

Program Video Out #1

Monitor / Time key video out

Key 1 Fill/Ext

Key 1 Key/Ext

Discrete AES Input