



UTAH-100/UDS XY-Panel



Setup and Operation Guide

UTAH 100/UDS XY Control Panel

- Document Number: 82102-0084
- Document Version: 1.0
- Date: January 28, 2015
- Printed in U.S.A.

Copyrights and Trademarks

© 2015 Utah Scientific, Inc., All rights reserved. Any use or reproduction of this guide's contents without the prior written consent of Utah Scientific, Inc. is strictly prohibited.

- UTAH 100 is a trademarks of Utah Scientific, Inc.
- Windows, Windows 2000 and Windows NT and XP are registered trademarks of Microsoft Corporation.
- All other product names and any registered or unregistered trademarks mentioned in this guide are used for identification purposes only and remain the exclusive property of their respective owners.

Notice

Information contained in this guide is subject to change without notice or obligation. While every effort has been made to ensure that the information is accurate as of the publication date, Utah Scientific, Inc. assumes no liability for errors or omissions. In addition, Utah Scientific, Inc. assumes no responsibility for damages resulting from the use of this guide.

FCC Compliance (USA) and Digital Equipment Compliance (Canada)

This equipment has been tested and found to comply with the limits for a Class A, digital device, pursuant to Part 15, Subpart B of the FCC Rules and the Canadian EMC Requirement (ICES-003). These limits are designed to provide reasonable protection against harmful interference when the equipment is operated in a commercial environment. This equipment generates, uses, and can radiate radio frequency energy and, if not installed and used in accordance with the instruction manual, may cause harmful interference to radio communications. Operation of this equipment in a residential area is likely to cause harmful interference, in which case, the user will be required to correct the interference at their own expense. Shielded cables must be used to ensure compliance with the FCC Class A limits.



Declaration of Conformity

Utah Scientific, Inc.

4750 Wiley Post Way, Suite 150
Salt Lake City, Utah 84116-2878 U.S.A.

We declare our sole responsibility that the UTAH-100/UDS Digital Routing Switcher is in conformance with the following standards:

Emission

- EN55022:1994+A1&A2

Immunity

- EN55024:1998
- EN61000-3-2
- EN61000-3-3

Safety

- IEC 60950-1:2001 /EN 60950-1:2001

Following the provisions of the Directive(s) of the Council of the European Union:

- EMC Directive 89/336/EED
- Low Voltage Electrical Directive 72/23/EEC

Utah Scientific, Inc. hereby declares that the product specified above conforms to the above Directive(s) and Standard(s).



Important Safeguards and Notices

This section provides important safety guidelines for the Operator and Service Personnel. Specific warnings and cautions are found throughout the guide where they apply, but may not appear here. Please read and follow the important safety information, specifically those instructions related to risk of fire, electric shock, or injury to persons.

Safety Symbols



- Hazardous Voltage symbol



- Caution symbol. The product is marked with this symbol when it is necessary to refer to the manual to prevent damage to the product.

Warnings

Please observe the following important warnings:



- Any instructions in this guide that require opening the chassis, changing a power supply, or removing a board, should be performed by qualified personnel only. To reduce the risk of electric shock, do not perform any service unless you are qualified to do so.
- Heed all warnings on the unit and in the operating instructions.
- Do not use this product in or near water. Disconnect AC power before installing any options or servicing the unit unless instructed to do so by this manual.
- This product is grounded through the power cord ground conductor. To avoid electric shock, plug the power cord into a properly wired receptacle before connecting the product inputs or outputs.
- Route power cords and other cables so they won't be damaged.
- The AC receptacle (socket) should be located near the equipment and be easily accessible.
- Disconnect power before cleaning. Do not use any liquid or aerosol cleaner - use only a damp cloth.



- Dangerous voltages exist at several points in this product. To avoid personal injury, do not touch exposed conductors and components while power is on. Do not insert anything into either of the systems two-power supply cavities with power connected.
- Do not wear hand jewelry or watches when troubleshooting high current circuits, such as power supplies. During installation, do not use the door handles or front panels to lift the equipment as they may open abruptly and injure you.
- To avoid fire hazard when replacing fuses, use only the specified correct type, voltage and current rating as referenced in the appropriate parts list for this product. Always refer fuse replacement to qualified service personnel.
- Have qualified personnel perform safety checks after any service.

Cautions

Please observe the following important cautions:



- When installing this equipment do not install power cords to building surfaces. To prevent damage when replacing fuses, locate and correct the problem that caused the fuse to blow, before reconnecting power.
- Use only specified replacement parts

Company Information

Utah Scientific, Incorporated

**4750 Wiley Post Way, Suite 150
Salt Lake City, Utah 84116-2878 U.S.A.**

- Telephone: +1 (801) 575-8801
- FAX: +1 (801) 537-3098
- Technical Services (voice): +1 (800) 447-7204
- Technical Services (FAX): +1 (801) 537-3099
- E-Mail -General Information: info@utsci.com
- E-Mail -Technical Services: service@utsci.com
- World Wide Web: <http://www.utahscientific.com>
- **After Hours Emergency:** +1 (800) 447-7204. Follow the menu instructions for Emergency Service.



Warranty Policies

Hardware Warranty

Utah Scientific, Inc. warrants to the original purchaser that the Utah Scientific hardware is free from defects in materials and workmanship and will perform substantially in accordance with the accompanying written materials under normal use and service for a period of two (2), five (5), or ten (10) years from the date of shipment. Any implied warranties on hardware are limited to the above three warranty periods (depending on purchase). Some states/jurisdictions do not allow limitations on duration of an implied warranty, so the above limitation may not apply to certain specific purchasers.

Software Warranty

Utah Scientific warrants that the software will perform substantially in accordance with the accompanying written materials for a period of one (1) year from the date of shipment.

Customer Remedies

For the first one (1) year after purchase of the software and the first two (2), five (5), or ten (10) years after the date of purchase of the hardware, Utah Scientific's and its suppliers' entire liability and purchaser's exclusive remedy shall be, at Utah Scientific's option, either:

- Return of the price paid, or
- Repair or replacement of the software or hardware that does not meet the above warranties and is returned to Utah Scientific under the returned materials authorization (RMA) process with freight and forwarding charges paid.

After the initial warranty periods, purchaser's exclusive remedy is the repair or replacement of the hardware upon payment of a fixed fee to cover handling and service costs based on Utah Scientific's then-current price schedule. The above warranties are void if failure of the software or hardware has resulted from an accident, abuse, or misapplication. Any replacement software or hardware will be warranted for the remainder of the original warranty period or thirty (30) days, whichever is longer.

No other warranties. To the maximum extent permitted by applicable law, Utah Scientific and its suppliers disclaim all other warranties, either express or implied, including, but not limited to implied warranties of merchantability and fitness for a particular purpose, with regard to the software, the accompanying written materials, and any accompanying hardware. This limited warranty gives the purchaser specific legal rights. These rights may vary in certain states/jurisdictions.

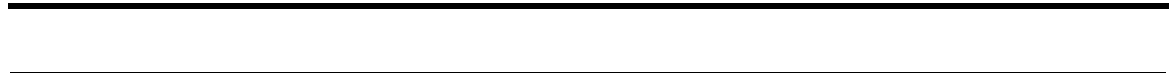
No liability for consequential damages. To the maximum extent permitted by applicable law, in no event shall Utah Scientific or its suppliers be liable for any damages whatsoever (including without limitation, damages for loss of business profits, business interruption, loss of business information, or any other pecuniary loss) arising out of the use of or inability to use Utah Scientific products, even if Utah Scientific has been advised of the possibility of such damages. Because some states/jurisdictions do not allow the exclusion or limitation of liability for consequential or incidental damages, the above limitation may not apply in those circumstances.

Table of Contents

Section 1

Panel Operation

Introduction	1-1
System Setup Requirements	1-1
The UTAH-100/UDS XY Panel	1-2
Home	1-2
Options	1-2
Source Track Button	1-3
Auto Source Preset	1-3
Auto Destination Select	1-3
Knob Clockwise	1-4
Knob Take	1-4
Network Setup	1-4
Network Summary	1-6
Panel Info	1-7
Additional Notes - Review	1-7
Operation / Making a Take	1-8
Panel Operation	1-10
The Link Light	1-11
Panel Buttons	1-12
Source and Destination	1-12
Lock	1-12
Browser Operation	1-13
General Overview	1-13
Radio Buttons	1-13
System	1-13
Source Categories	1-14
Destination Categories button	1-15
Encoding	1-16
Enabling Function Parameters	1-16
Save and Program	1-17





Section 1

Panel Operation

Introduction

This guide covers the setup and operational detail of the UTAH-100/UDS XY panel, including fixed panel operation and the accompanying browser utility.

System Setup Requirements

- Windows™ operating system 7
- Java 7.07™ or newer
- Internet Explorer™, Firefox™, or Chrome™
- Ethernet connection

All UDS devices - PC, Router, and Panel - connect over Ethernet on a house network, or within a stand-alone (direct) mode. The system will provide default IP address during setup, or you can use unique IP addresses if required within your operation.

The UTAH-100/UDS XY Panel

Home

Press the Home button to take the panel to the main menu selection (below).



Figure 1-1. Home button and screen display

Using the scroll wheel, rotate to **Options** and press the wheel to select.

Options

There are five options available for modification from this screen; Source Track Button, Auto Source Preset, Auto Destination Select, Knob clockwise or counter-clockwise control, and Knob Take (on or off). Highlight the option to select, then press the knob to make a change, or press the **Enable/Disable** button to the right to make a change. Note: You must press the **Save** button to complete the change.



Figure 1-2. XY Panel Options



Source Track Button

Source Tracking allows automatic Takes when enabled. The current Tracking status will display at the location illustrated below. When enabled, takes will occur immediately whenever a new Source is highlighted by scrolling. Takes are simultaneous, without any Preset or separate 'Take' activation.



Figure 1-3. Track button - enabled

Use the **Track** button to toggle tracking on or off.

Note that while in Tracking mode, the last Preset remains listed (bottom left within the display), allowing for an immediate return to the last preset by pressing the Take button.

Disabling Source tracking will turn the "track" item off and the Sources will then work in a Preset/Take mode only. In this mode you will scroll to the desired Source and the "Take" button (lower right physical button on the panel will start blinking, and when pressed, the switch will occur.)

Note: When disabled, the preset window will always contain the Source you will be taking next, which will remove the ability to revert back to the previous Source.

Auto Source Preset

When enabled, individual selections are automatically preset by scrolling the knob in the Source Selection menu. If disabled, Source Preset selections are activated by pressing the scroll button only.

Auto Destination Select

When enabled, each destination scrolled to (in the Destination menu) will update the source for that particular destination. If disabled, the scroll knob must be pressed to obtain the destination's current status.

Knob Clockwise

Knob Clockwise changes the direction the highlighter (on the LCD screen) scrolls when the scroll knob is rotated.

Knob Take

Knob Take allows the user to press the knob (or the Take) button to send a take. If disabled, the user must press the Take button to make the actual take.

Network Setup

The first step in UDS XY panel operation is establishing a good network connection. From the main menu, use the scroll knob to select Network Setup, then push the knob to activate network configuration.

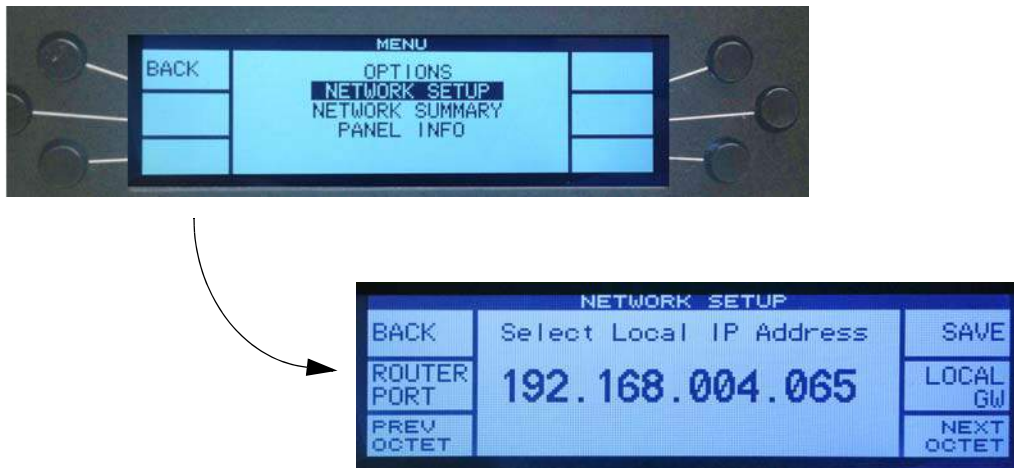


Figure 1-4. Network menu selection and screen



The Network Setup screen allows modification to Local Gateway, Mask and Router IP; modified by pressing the corresponding button on the panel.



Figure 1-5. Toggle button

The options are cycled through with each button press. The router IP is the actual router device this panel communicates *with*, and its corresponding port must match the XY panel; 5001 in nearly all cases.

The octets for IP address, Gateway, and Mask are selected by pressing the lower right and left buttons.



Figure 1-6. Octet toggle control

You can also use the scroll wheel to move up or down numerically. Jump through larger number sequences with faster scroll wheel moves.

In most circumstances the Router Port should be left at 5001.

The system will prompt the user to Save or discard changes (Yes or No) before leaving the screen. Note the asterisk on the Save button, indicating pending changes.

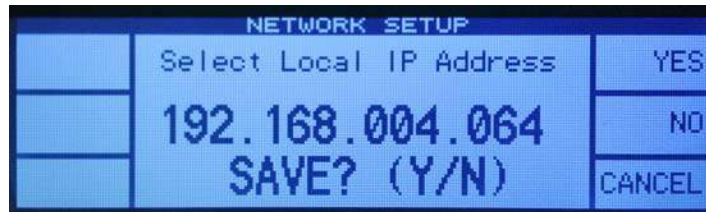


Figure 1-7. Save button - asterisk indicating change

Important note: The chassis must be reset at the back of the unit (reset button) following any address change.

Network Summary

Select Network Summary from the main menu.

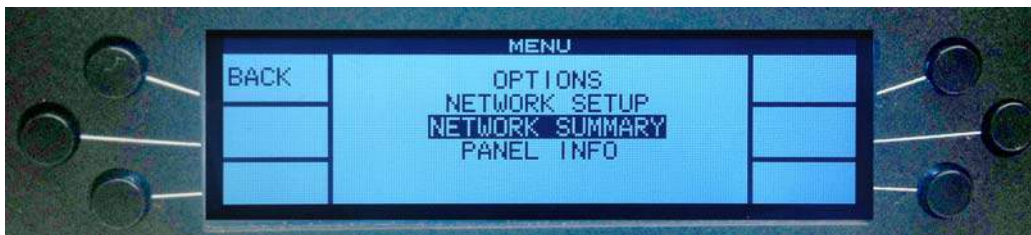


Figure 1-8. Network Summary



Edit activates the Network Setup area (described previously). The remainder of the screen contains IP, Gateway, Mask, and Port address detail for both the XY panel and router.

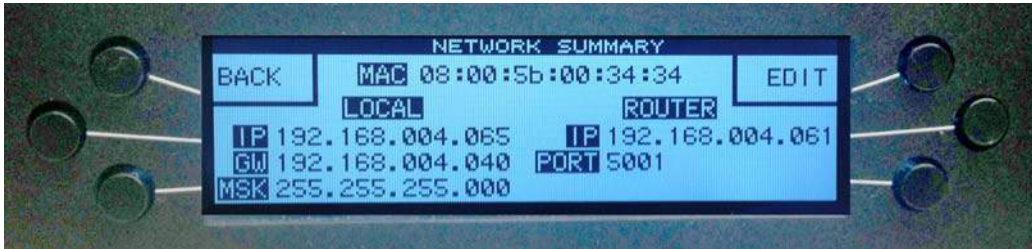


Figure 1-9. Existing panel and router address detail

Panel Info

This is a summary of software, boot loader, and firmware versions for the XY panel.



Figure 1-10. Panel Info screen

Additional Notes - Review

Sources and Destinations are divided into the needed categories for the specified panel through the web GUI. It is also important to note that Categories cannot be 'set up' through the chassis.

Operation / Making a Take

Select a Destination Category by pressing the Home button twice, then make sure Dest Category is indicated in the upper right portion of the screen.



Figure 1-11.

Press the Home button again if you do not get the above result.

The Dest Category should be highlighted in the upper right portion of the screen.

Now select the Destination category by scrolling up and down the categories in the middle of the screen display (using the scroll wheel).

Push the scroll wheel when the category selection is made, use the scroll wheel to select the actual destination.

Note: *The Source will automatically be displayed when Auto DST Select is enabled -- as each new destination is scrolled to. If Auto DST Select is disabled, the scroll knob must be pressed to see the source on the destination.*

The selection is again made from the list in the middle of the screen.

- Preset the Selection
- Make the Take (Take button)

Note: *When the Preset is different from the Source status, both the Preset (on the screen) and the Take button will flash.*

After the destination is selected, press the Source Category button. Scroll the knob to select the desired source category and press the knob, then scroll the knob to select the desired source.



The preset will flash to indicate a take is pending. Press the Take button to make the Source/Destination connection.

Note: *If the Auto Source Preset is enabled, the source will be auto preset. Otherwise you must press the knob to preset, then press the Take button.*

Shortcut

Push the Destination button (upper left button on the chassis) to quickly reveal a display of the Destination's location within its associated category.

Cycle through multiple categories (if they have been assigned) by repeatedly pushing the above Destination button.

Panel Operation

Press the Home/Menu button until the *Home Page* appears.



Figure 1-12. Home Page

The currently selected Destination, Source, and Preset will appear on the left side of the display. Categories are indicated on the right side of the display, and the contents of the currently highlighted category are displayed in the middle of the screen.

Typically a Destination is selected first. To make a change, press the black panel button associated with Destination Category, use the scroll wheel to make a new category selection in the middle (such as monitors), then press the knob to reveal the contents of that particular category.



Figure 1-13.



Turn the scroll wheel to highlight different category items; if *Auto Destination Select* is enabled, the Source associated with the highlighted Destination will automatically display in the corresponding cell at the left.



Figure 1-14. Source cell revealing associated category selection (Home page)

Selections will immediately *Take* as you scroll from one list item to the next. (Tracking enabled, lower right corner of the screen.)

To make a switch when Tracking is disabled, activate Source Category (right side of display), highlight the desired group within the middle of the screen (cameras, for example), press the scroll wheel, then scroll (wheel turn) to the desired item. The Take will not actually occur until you press the fixed Take button on the panel.

The Link Light

The Link Light indicates successful network communication

- Red – no network connection
- Green – active network connection

Panel Buttons

Source and Destination

The panel's four Source and Destination buttons are soft-programmed within the associated browser utility.

DST 1 & 2/SRC 1 & 2 buttons on chassis

These can be configured to make direct takes for that particular Destination or Source.

Lock

The Lock feature is enabled by selecting any individual output on the display, then pressing the panel's lock button to prevent any subsequent source or destination from being associated with that output. A 'padlock' icon will appear when an output is currently locked.

Destination Lock Management

Destinations can be locked by pressing the Lock button on the chassis when the Destination is selected. This will prevent any unauthorized takes on that particular Destination. Lock status will be displayed on the screen, and can be toggled on and off with the Lock button.



Browser Operation

General Overview

Radio Buttons

The System and Network function essentially the same as the UDS softpanel, though the Src and Dest Categories function a bit differently as the XY panel actually contains Source and Destination categories. You have the ability to add new categories and edit or remove them after creation, and the interface displays all Sources and Destinations contained within each category.

Once any changes are made the operator programs the panel by clicking 'Program Panel'. You can maintain both Source and Destination categories.

Destinations and Sources can be contained within multiple categories.

System

All current versions of the software, firmware, and bootloader are displayed when checked.

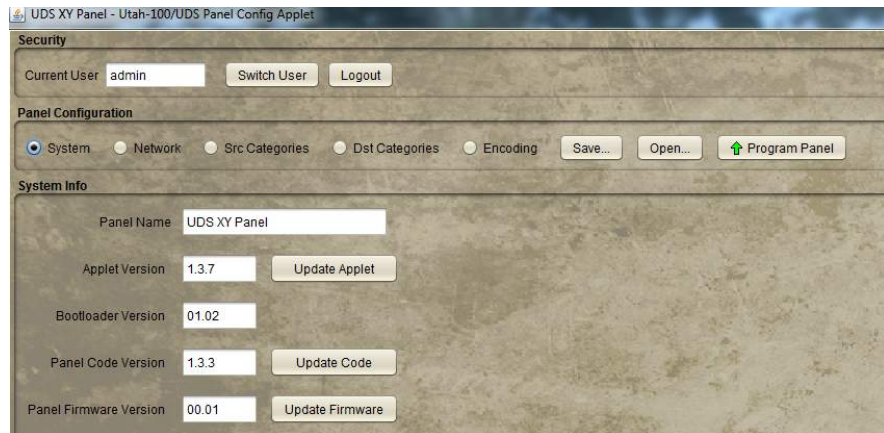


Figure 1-15. System display (radio button)

Source Categories

The Sources listed in the window at the right represent actual sources retrieved from the router. These sources are defined inside the router applet. Click the category name in the left-hand column to display all associated Sources (right-hand column). Check or uncheck each individual source to activate or de-activate each item.

New Source categories can be defined in this screen by clicking the **Add** button.

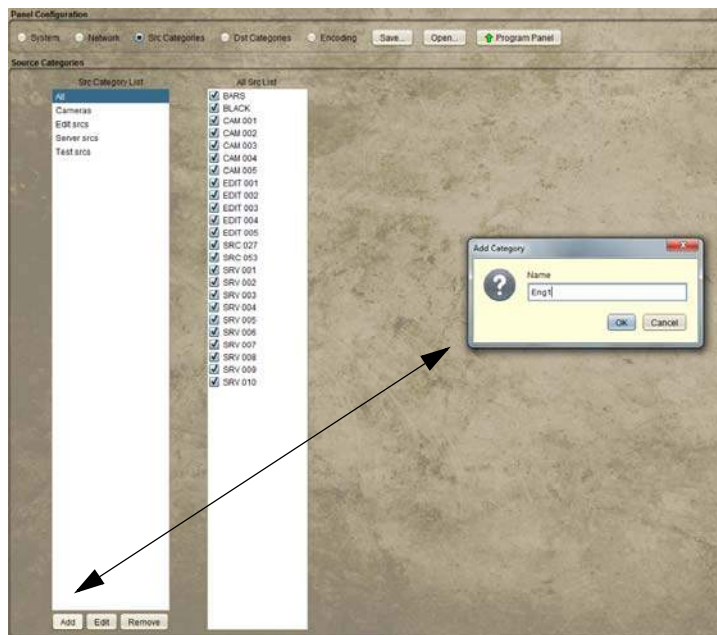


Figure 1-16. Add Category button (Sources)



Destination Categories button

As with Source categories (above), the Destinations listed in the window at the right represent actual destinations retrieved from the router. These destinations are defined inside the router applet. Click the category name in the left-hand column to display all associated Destinations (right-hand column). Check or uncheck each individual destination to activate or de-activate each item.

New Destination categories can be defined in this screen by clicking the **Add** button.

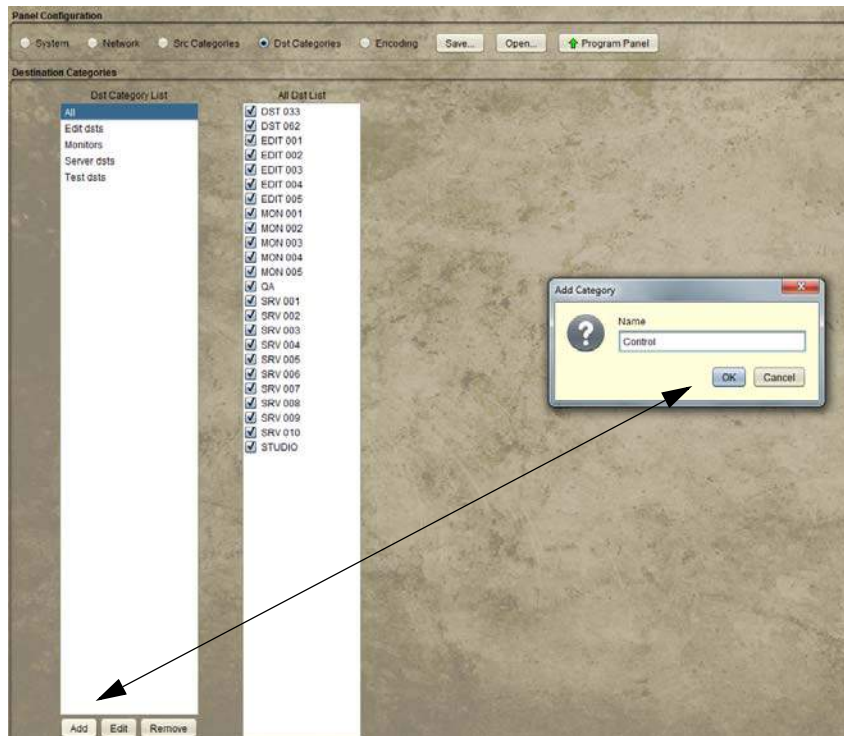


Figure 1-17. Add Category button (Destinations)

Encoding

The Source and Destination buttons at the left side of the panel are configurable by dragging the desired source or destination from the corresponding listing at the right.



Figure 1-18. Src and Dst button population

The above buttons are configurable for up to four Sources or Destinations as needed.

Enabling Function Parameters

The six radio buttons in the group area immediately above the browser's soft panel enable or disable the corresponding functions on the hard panel.

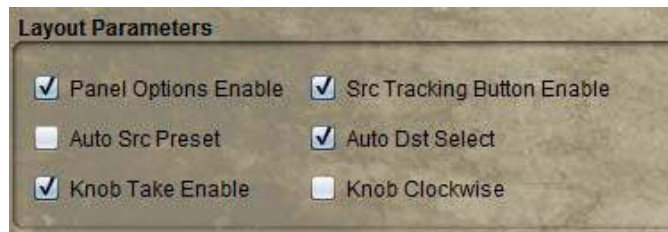


Figure 1-19. Function enabling (soft panel radio buttons)



This is identical to the Options setup area within the Chassis screen, with the exception of including 'Panel Options Enable'. Unchecking Panel Options Enable will deactivate the Options control on the XY panel.

Refer to **Options** on page *Options* (page -2) for a definition.

Save and Program

The Save button function saves the configuration to a uniquely named file in a specified directory. This is useful if multiple versions of the panel configuration are needed.

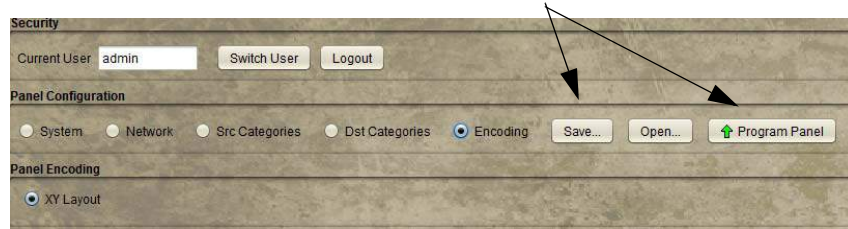


Figure 1-20.

Program commits any modifications to the XY Panel.

A

active network connection 1-11
asterisk 1-6
Auto Destination Select 1-2, 1-3, 1-4
Auto Source Preset 1-2, 1-3

B

boot loader 1-7
Browser Operation 1-13

C

Chrome 1-1

D

Destination 1-10, 1-11
Destination Categories 1-15

E

Encoding 1-13, 1-16
Ethernet 1-1

F

Firefox 1-1
firmware version 1-7
Function Parameters
 enabling 1-16

H

Home Page 1-10

I

Introduction 1-1
IP address 1-1

J

Java 1-1

K

Knob
 clockwise and counter-clockwise 1-2

L

Local Gateway 1-5
Lock 1-12

M

Mask 1-5

N

Network Setup 1-4
 screen 1-5
Network Summary 1-6
no network connection 1-11
nternet Explorer 1-1

O

octet 1-5

P

Panel Buttons 1-12
Panel Info 1-7
Panel Operation 1-1, 1-10
Panel Setup 1-2
port 1-5
Preset 1-10
Program 1-17

R

reset button 1-6
Router IP 1-5

S

Save 1-17
Save button 1-6
save changes 1-6
Source 1-10, 1-11
Source Categories 1-14
Source Category 1-11
Source Tracking 1-3
System 1-13
System Setup Requirements 1-1

T

Take 1-3, 1-11
Tracking mode 1-3