



National Park Service Photo

# Router Control Panels Hardware and Software



## UCP-LC Series

Utah Scientific's UCP-LC family features dynamic labeling of high-resolution LCD switches to provide a completely "soft" user interface. These panels are driven by a unique configurable menu system that offers a very powerful, yet user friendly means of controlling any routing system.

### UCP-LC16

22 user-programmable, high-resolution, multicolor LCD display buttons



The UCP-LC16 panel provides one row of programmable buttons with eight characters and user defined colors. The flexible, 32-menu layering structure provides fast access to a variety of panel configurations. All buttons are fully programmable for any function such as source, destination, salvos, level mapping, audio attributes, protect / lock, paging, and breakaways.

### UCP-LC32

38 user-programmable, high-resolution, multi-color LCD display buttons



The UCP-LC32 panel offers two rows of programmable buttons with eight characters and user defined colors. The flexible, 32-menu layering structure provides fast access to a variety of panel configurations. All buttons are fully programmable for any function such as source, destination, salvos, level mapping, audio attributes, protect/lock, paging, and breakaways.

### Rear View



Available with  
redundant power  
supplies

## UCP-LC80

80 user-programmable, high-resolution, multi-color LCD display buttons



The UCP-LC80 panel has 80 user programmable high resolution multi-color buttons. The panel uses dynamic labeling of LCD buttons to provide a completely “soft” user interface. Panel setup is driven by a unique configurable menu system providing a powerful yet user friendly experience. Flexible menu layering provides quick access to any established panel configuration. All buttons are programmable to any function such as source, destination, salvos, level mapping, breakaway switching and more.

## UCP-GPIO/E

16 GPI and 16 GPO



The UCP-GPIO/E provides the means to extend any Utah Scientific router control system to external devices by means of contact closures. The 16 in-bound contact closures (GPIs) are opto-isolated for ease of installation. These contacts can be configured for latching or momentary operation, and they are programmable for mapping the individual contacts to specific source-destination combinations.

In momentary operation, the crosspoint associated with that contact is activated as long as the closure is active. When the closure is released, the router output is switched back to the input that was selected before the closure was activated. This mode of operation is generally referred to as “Joystick Override” mode.

The 16 outbound closures are provided by relays, allowing external devices such as tally lights or other indicators to be activated when a specific source-destination combination is active in the router.

## Rear View of 2-RU and 1-RU control panels



Flexible connection options include Ethernet or U-Net (Utah Scientific’s network that enables serial looping of panels) using standard CAT-5 cabling. In critical applications, UCP panels provide unique redundancy by allowing both connection methods.

## Soft-LC

### Bring modern UCP-LC control features to a PC near you

Soft-LC is a software-based, virtual control panel for personal computers. Want to add modern, flexible UCP-LC panels to your router control system? Do your conference rooms and newsroom have all the routing control they need? Easily move to the newest control panel designs with 16, 32, or 80 button capabilities!

## Features

- Organize sources and destinations by categories or group
- Allows users to put various devices in custom named categories of their choice
- Allow users to place devices in preconfigured groups like SAT, CAM, MON, etc.
- Enables custom direct button programming for sources and destinations
- Custom display and button colors
- Import custom button icons
- No annual maintenance fees



## Specifications

- Runs on Windows10 PC, 1GHz or faster processor, 2GB RAM, 100MB Disc Space, DirectX 9 or later with WDDM 1.0 driver
- Available as a site license
- Can be used with or as an upgrade to Utah Scientific SoftPanel 2

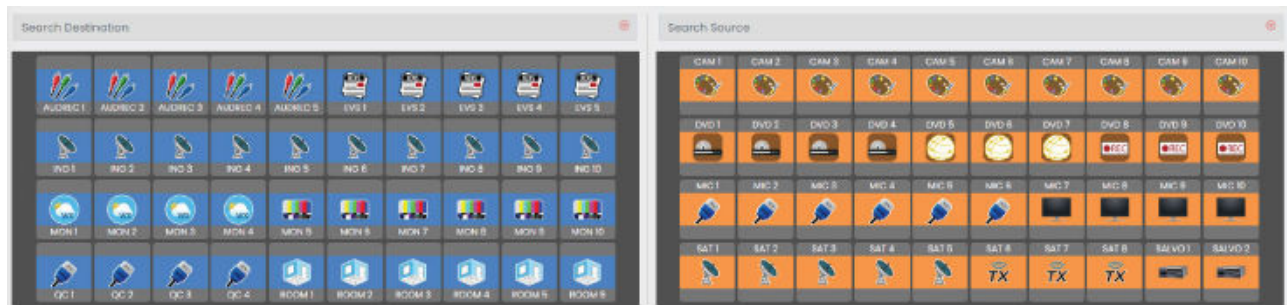
# WebPanel

## Router Control From Anywhere In The World

Need to control your facility routing from a distant location? Bring worldwide flexibility to your router operations with Utah Scientific's WebPanel. Simply install the Linux WebPanel server and configure your users and their access rights from your browser.

## Features

- Our most readily deployed control solution
- Browser based--Chrome, Edge, Safari
- Auto-populates based on router configuration
- Source and destination search functions
- Customizable button icons, colors, text
- OS independent
- Password enabled



## Specifications

- Installation includes a 2RU Linux server with redundant power supplies and hard drives
- Administrator control of user access and rights
- Multiple router controller capable
- Computers can be laptops, desktops, or tablets

## SoftPanel-2 GUI Control Panel System

SoftPanel-2 is a software-based, virtual control panel for personal computers. Users can create custom, virtual control panels with the panel creation toolkit. With the free-form toolkit, users can create their own layouts and choose background and button colors, button sizes, and a variety of other attributes. SoftPanel-2 also includes templates that emulate the Utah Scientific UCP Series hardware control panels.

Using the Player module, virtual panels created with SoftPanel-2 can be operated from network computers connected to the Utah Scientific control system. Router definitions and source/destination tables are fully synchronized with the Utah Scientific controller, ensuring that labeling in the SoftPanel-2 panels matches the labels that appear on the hardware control panels. Virtual control panels can be installed on any computer in a facility, and they can be operated using touch screen monitors for added flexibility.



## SoftPanel-2 Features

- Free-form panel creation
- Replicates hardware control panels for traditional control panel operation
- Linked with Utah Scientific controllers for full synchronization
- Multiple license packages available

## Hardware Panel Specifications

### Connection

- (1) RJ-45: 10/100 Ethernet
  - (2) RJ-45: Looping U-Net  
(Utah Scientific control network)
  - (1) 422/232: DB-9F Subminiature  
Utah Scientific RCP-1 serial  
protocol
  - (1) RJ-45: Diagnostic port
  - (1) RJ45: Can Exp port - panel expansion
- 

### Power

100-240VAC 50/60Hz  
Power consumption less than 15 watts

---

### Physical Rack Mount

- Width: 19" (48.26cm)
  - Depth: 5.5" (14cm)
  - Height: 1RU, 1.75" (4.45cm)  
2RU, 3.5" (8.9cm)
  - Weight: 1RU, 3.5lb (1.6kg)  
2RU, 5lb (2.27kg)
- 

### Environmental

Operating temperature 32-104 degrees F (0-40  
degrees C)  
Relative humidity range: 0-90%, non-condensing

---

## SoftPanel-2 Specifications

Operating System	Windows 10
RAM	8MB
Display	1920x1080 (Recommended)
Ethernet	10/100 Megabit

---

10-year limited hardware warranty

**10**  
Year  
Warranty

# **US** *Utah Scientific*

Specifications are subject to change without notice

10-year limited hardware warranty

Utah Scientific  
4750 Wiley Post Way, Suite 200  
Salt Lake City, Utah, 84116, USA  
Phone: 801.575.8801  
U.S. and Canada Toll Free: 800.453.8782

Utah Scientific  
Via F.lli Bandiera 52  
20843 Verano Brianza (MB)  
Italy  
Phone: +39 0362 805778

[www.utahscientific.com](http://www.utahscientific.com)  
[sales@utahscientific.com](mailto:sales@utahscientific.com)

**10**  
Year  
Warranty